

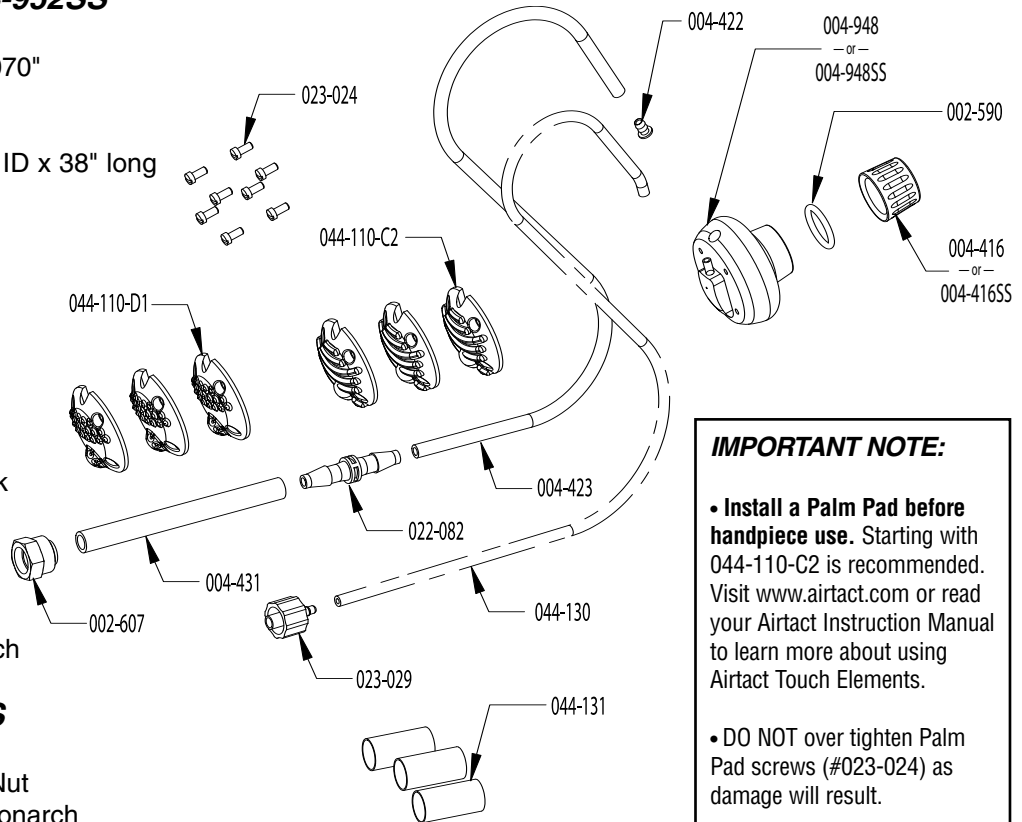


Airtact Palm Touch Element PARTS LIST

for Monarch Handpiece • PART #004-952 & PART #004-952SS

Included with #004-952 & #004-952SS

Part No.	Description
002-590	O-Ring, 7/16" x 9/16" x .070"
002-607	Nut, with sleeve
004-422	Hose / Barb Retainer
004-423	Handpiece Tubing, 3/32" ID x 38" long
004-431	Urethane Tubing, 1/4" OD x .17" I.D. x 10"
022-082	Tube coupling, 5/32"
023-024	SFHMS, #2-56 x 3/16"
023-029	Male 3/32" ID tube
044-110-C2	Palm Pad C2
044-110-D1	Palm Pad D1
044-130	Airtact Control Line, 050-054 x 48" length
044-131	3/4" length of Heat Shrink



Included only with #004-952

Part No.	Description
004-416	Locking Nut
004-948	Aluminum Knob - Monarch

Included only with #004-952SS

Part No.	Description
004-416SS	Stainless Steel Locking Nut
004-948SS	Stainless Steel Knob - Monarch

IMPORTANT NOTE:

• **Install a Palm Pad before handpiece use.** Starting with 044-110-C2 is recommended. Visit www.airtact.com or read your Airtact Instruction Manual to learn more about using Airtact Touch Elements.

• **DO NOT** over tighten Palm Pad screws (#023-024) as damage will result.