

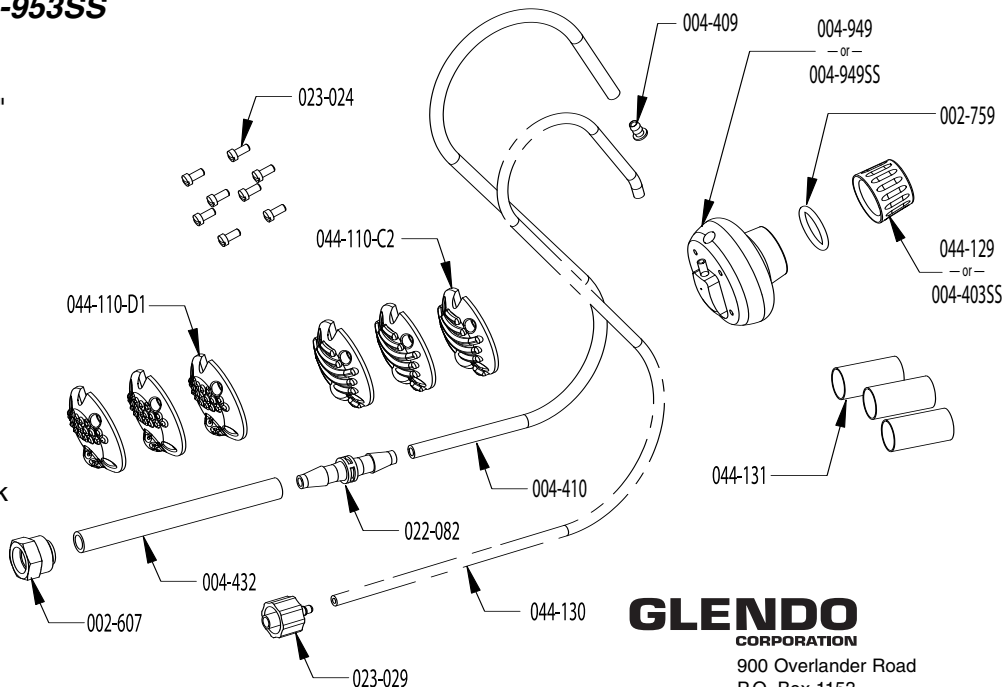


Airtact Palm Touch Element PARTS LIST

for 901 Handpiece • PART #004-953 & PART #004-953SS

Included with #004-953 & #004-953SS

Part No.	Description
002-607	Nut, with sleeve
002-759	O-ring, 1/2" x 5/8" x 1/16"
004-409	Hose / Barb Retainer
004-410	40" length of 050-005
004-432	Urethane Tubing, 1/4" OD x .17" I.D. x 4"
022-082	Tube coupling, 5/32"
023-024	SFHMS, #2-56 x 3/16"
023-029	Male 3/32" ID tube
044-110-C2	Palm Pad C2
044-110-D1	Palm Pad D1
044-130	Airtact Control Line, 050-054 x 48" length
044-131	3/4" length of Heat Shrink



Included only with #004-953

Part No.	Description
004-949	Aluminum Knob - 901
044-129	Locking Nut

Included only with #004-953SS

Part No.	Description
004-403SS	Stainless Steel Locking Nut
004-949SS	Stainless Steel Knob - 901

GLENDO CORPORATION

900 Overlander Road
P.O. Box 1153
Emporia, KS 66801 USA
800-835-3519 • 620-343-1084
fax 620-343-9640
glendo@glendo.com
www.grstools.com